



obr. Deputyczne Królewskie

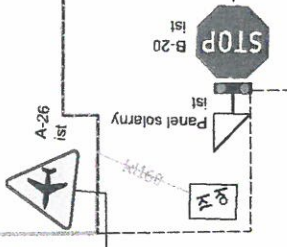
R R1/a

Deputyczne Królewskie E-17a ist

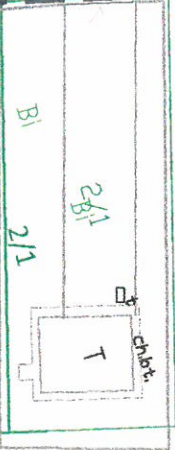
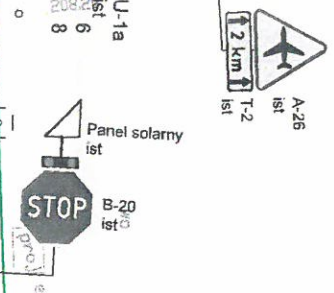
140

R R1/a

7A  
843 Chetm  
843 Zamosc  
31312 pl  
E-2a ist



843 Chetm  
843 Zamosc  
E-2a ist



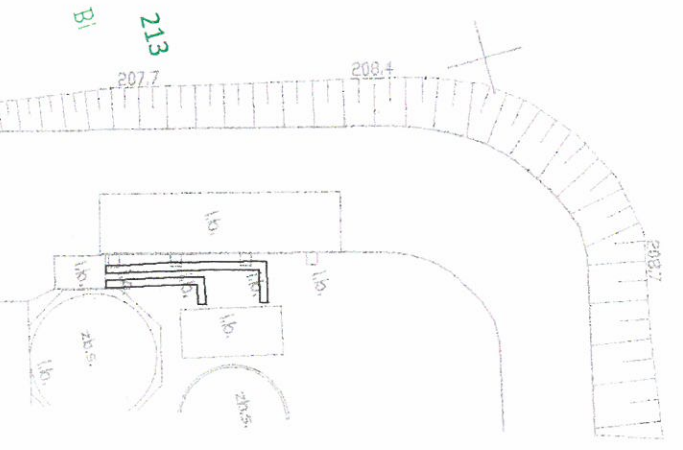
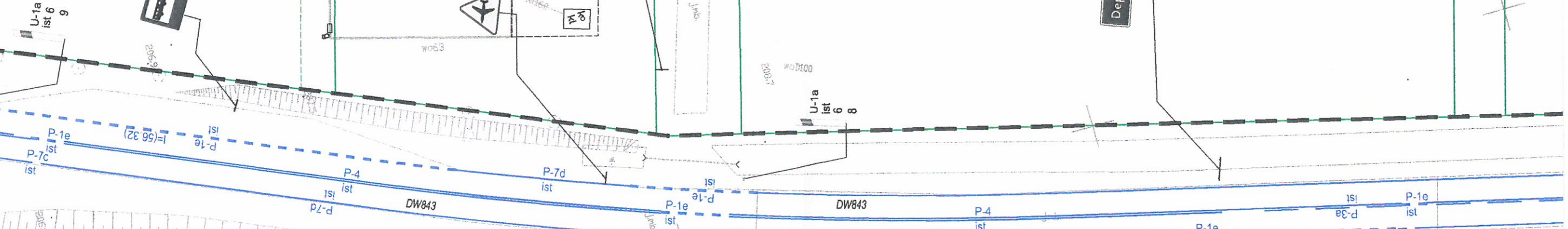
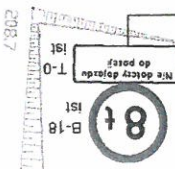
2/11

R11/a

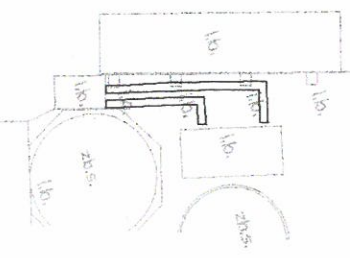
212

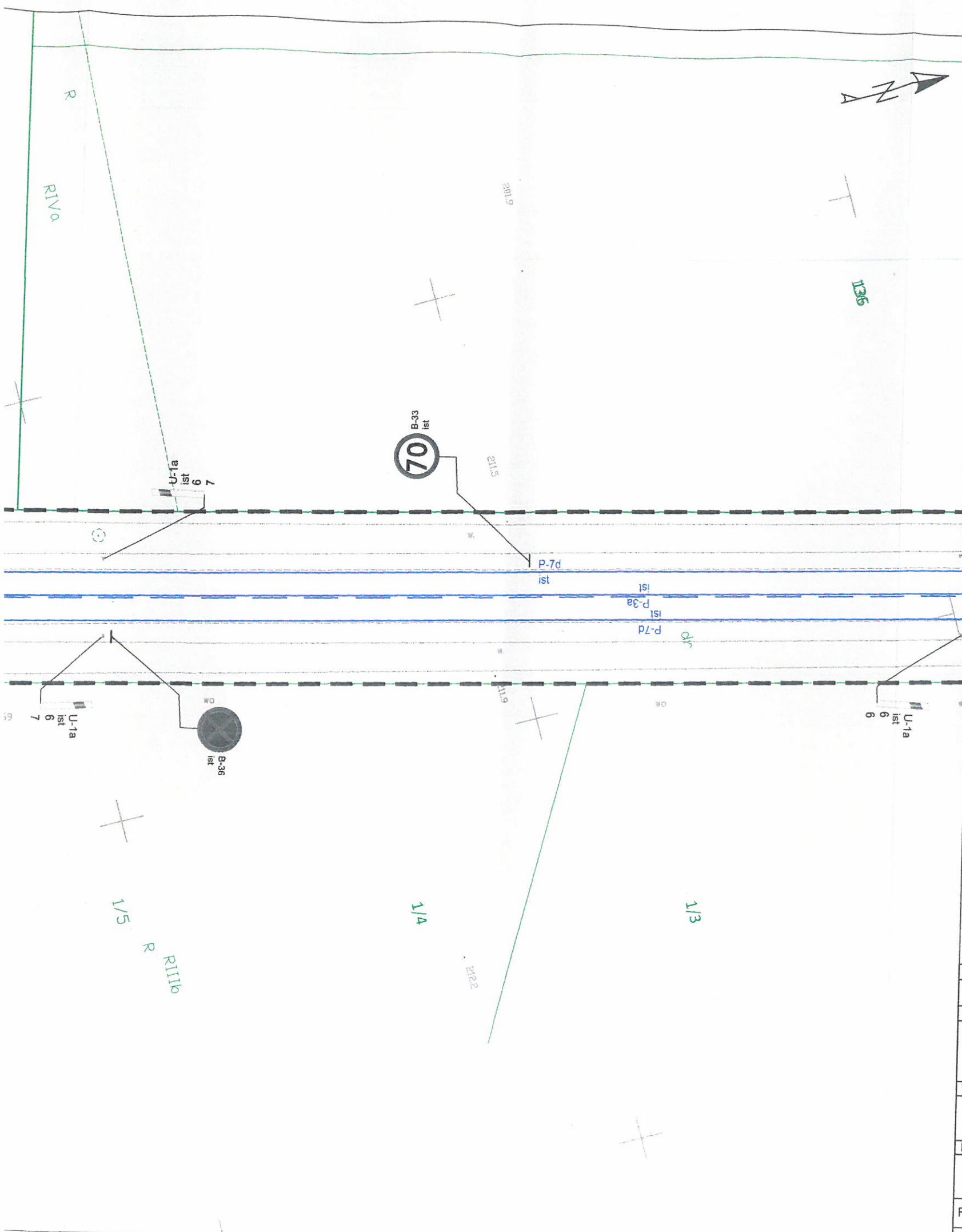
R1/a

80

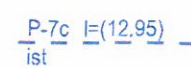



213





LEGENDA:

-  P-7c I=(12,95) ist istn. oznakowanie poziome
-  B-33 istn. oznakowanie pionowe

|  |                 |                    |              |            |
|--|-----------------|--------------------|--------------|------------|
| Inwestor   |                 |                    |              |            |
| Gmina Chełm Pokrówka, ul. Gminna 18, 22-100 Pokrówka   |                 |                    |              |            |
| Temat zadania  |                 |                    |              |            |
| PRZEBUDOWA SKRZYŻOWANIA DROGI GMINNEJ NR 104648L Z DROGĄ WOJEWÓDZKĄ NR 843 W KM 6+803 W MIEJSCOWOŚCI DEPUŁTYCZE KRÓLEWSKIE |                 |                    |              |            |
| Temat rysunku  |                 |                    |              |            |
| ISTNIEJĄCE OZNAKOWANIE   |                 |                    |              |            |
| Branża   | Stadium         | Data               | Skala        | Nr rysunku |
| DROGOWA  | ID              | 08.2022            | 1:500        | 1.1        |
| Projektanci  | Imię i nazwisko | Podpis             | Nr uprawnień | Branża     |
|  |                 | <i>[Signature]</i> |              |            |